

Supplies, tools and Materials Needed for Assembly

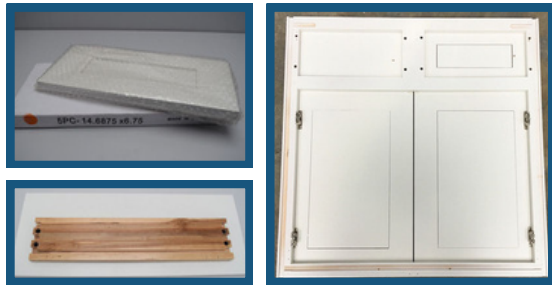


Drill



Pencil

Before beginning, use the second page of this instruction sheet to **verify you have the correct sizes** of 5-piece drawer heads.

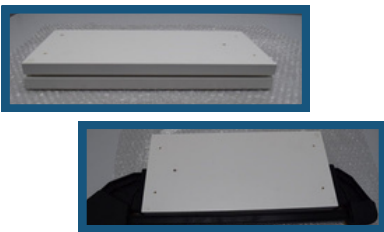


1 Standard Drawer Heads

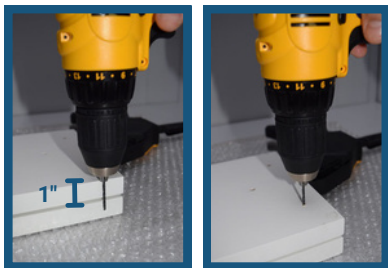
- Unpack and remove slab drawer head from box
- Place the slab drawer head face down and remove the drawer box front by removing the two screws on either side. (NOTE: Keep screws as they will be needed in Step 4)

False Front Drawer Heads

- Unpack and remove existing face frame/drawer head from box.
- Unscrew existing drawer head from face frame by loosening all four screws. (NOTE: Keep screws as they will be needed in Step 4)



- ### 2
- Place the 5-piece drawer head face down on a scratch resistant surface.
 - Place the slab drawer head face down on top of the 5-piece drawer head so that existing screw holes are visible.
 - Align all four sides of the 5-piece drawer head with slab drawer head.
 - Keeping the sides aligned, clamp the two heads together.



- ### 3
- Using a 3/32" drill bit, drill through the existing slab drawer head and screw holes into the 5-piece drawer head.
- *DO NOT DRILL ALL THE WAY THROUGH THE NEW 5-PIECE DRAWER HEAD***
- Place clear bumpers onto the 5-piece drawer head at all four corners.

4 Standard Drawer Heads

- Align the holes in the drawer box front with the holes on the 5-piece drawer head that were drilled in Step 3.
- Attach the drawer box front to the 5-piece drawer front using the screws that were kept from Step 1.
- Assemble the drawer box following our normal assembly instructions.

False Front Drawer Heads

- Ensure there is a 1" space from the top of the face frame to the top of the new drawer head.
- Align the screw holes and attach the 5-piece drawer head to the face frame.



Prior to drilling any holes, it is important that you verify the correct 5-piece drawer head size. This chart will guide you in matching the cabinet with the correct drawer head size. Find your cabinet type in the first column and then **verify the dimensions** on the 5-piece box packaging.

Cabinet	Top Drawer	Middle Drawer	Bottom Drawer
B12	11.5 x 6.75		
B15	14.5 x 6.75		
B18	17.5 x 6.75		
B21	20.5 x 6.75		
B24-2	23.5 x 6.75		
B27	13.1875 x 6.75		
B30	14.6875 x 6.75		
B33	16.1875 x 6.75		
B36	17.6875 x 6.75		
B39	19.1875 x 6.75		
B42	20.5 x 6.75		
BB42	14.5 x 6.75		
BB48	20.5 x 6.75		
CC30	14.5 x 6.75	29.5 x 14.25	14.5 x 14
CSF42	23.5 x 6.75		
DB12-3	11.5 x 6.75	11.5 x 10.5	11.5 x 10.5
DB15-3	14.5 x 6.75	14.5 x 10.5	14.5 x 10.5
DB18-3	17.5 x 6.75	17.5 x 10.5	17.5 x 10.5
DB24-3	23.5 x 6.75	23.5 x 10.5	23.5 x 10.5
DB30-3	29.5 x 6.75	29.5 x 10.5	29.5 x 10.5
DB36-3	35.5 x 6.75	35.5 x 10.5	35.5 x 10.5
DDB18	17.5 x 6.75		
DWR1548	14.5 x 5.5		
DWR1554	14.5 x 5.5		
DWR1560	14.5 x 5.5		
OC3384	32.5 x 6.75		
OC3390	32.5 x 6.75		
OC3396	32.5 x 6.75		
OCD337	32.5 x 6.75		
SB30	14.6875 x 6.75		
SB33	16.1875 x 6.75		
SB36	17.6875 x 6.75		
SB42	20.5 x 6.75		
SB48	23.5 x 6.75		
V24-2	23.5 x 6.75		
V27	13.1875 x 6.75		
V30	14.6875 x 6.75		
V33	16.1875 x 6.75		
V36	17.6875 x 6.75		
VB12	11.5 x 6.75		
VB15	14.5 x 6.75		
VB18	17.5 x 6.75		
VDB12	11.5 x 6.75	11.5 x 10.5	11.5 x 10.5
VDB15	14.5 x 6.75	14.5 x 10.5	14.5 x 10.5
VDB18	17.5 x 6.75	17.5 x 10.5	17.5 x 10.5
VSB36	15.25 x 6.75	10 x 6.75	
VSB42	11.75 x 6.75	17 x 6.75	
VSB48	11.75 x 6.75	23 x 6.75	